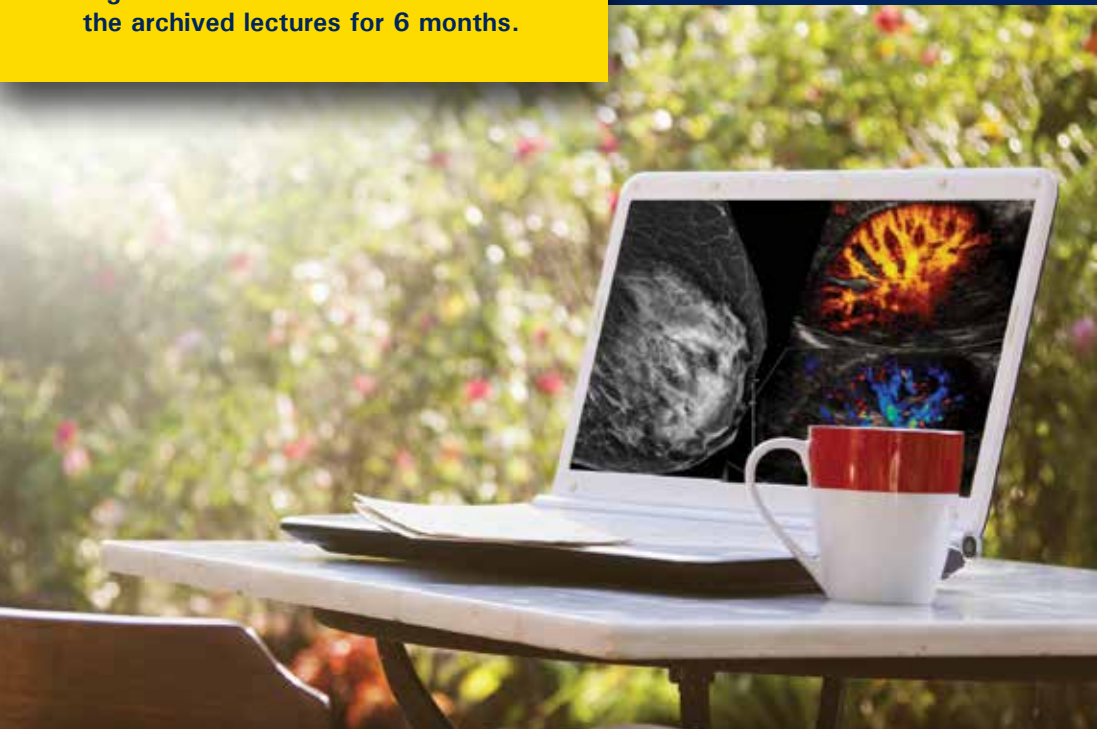


# JOIN US LIVE WEBCAST

Registered attendees have access to the archived lectures for 6 months.

UC San Diego  
SCHOOL OF MEDICINE



**NO RISK  
REGISTRATION!**

This educational activity will be held via webcast. Should you need to cancel your registration you may do so without penalty.

*45<sup>th</sup> Annual*

## Post Graduate Radiology Course

October 26 – November 1, 2020

38.5 AMA PRA Category 1 Credits™

Including Special Session:  
**Fluoroscopic Safety**

November 1, 2020 • 4.25 Hours

*22<sup>nd</sup> Annual*

## Breast Imaging and Interventions Update

October 30 – November 1, 2020

15.5 AMA PRA Category 1 Credits™

**SAM Sessions Available**

45<sup>th</sup> Annual  
Post Graduate  
Radiology Course

### About The Meeting...

Attend the 45<sup>th</sup> Annual Post Graduate Radiology Course and hear the latest and best practices in radiology. The sessions will focus on subjects from the various subspecialties in radiology, including neuroimaging, chest and cardiac imaging, nuclear medicine, abdominal imaging, musculoskeletal and pediatric imaging. In addition, experts will discuss the challenges facing radiology given the changing environment of medicine. New this year is a session focused on radiation safety and dose saving techniques. Faculty will discuss radiation risks, protection, appropriate use and safety tips.

### Target Audience

The course is designed for board certified radiologists, in private or academic practice. This course is also appropriate for trainees at various levels in diagnostic imaging and other practicing physicians desiring insight into the current roles of imaging in a managed care environment. In addition, allied health care professionals seeking an update on recent advances in radiology will also benefit from this course.

### Accreditation

The University of California San Diego School of Medicine is accredited by the Accreditation Council for Continuing Medical Education to provide continuing medical education for physicians.

The University of California San Diego School of Medicine designates this live activity for a maximum of 38.5 *AMA PRA Category 1 Credit(s)*<sup>™</sup>. Physicians should claim only the credit commensurate with the extent of their participation in the activity.

Category A/A+ CE Credit is pending approval by the ASRT. The number of A CE credits will be available approximately 30 days prior to the meeting. Please visit [ucsd.edusymp.com](http://ucsd.edusymp.com) or call (813) 806-1000 regarding the availability of Category A CE credit.

### Educational Objectives

Attendees should, at the completion of this course, be able to:

- Demonstrate improved skills in performing and interpreting radiologic procedures.
- Develop an organized approach to establishing an accurate differential diagnosis.
- Discuss the latest in diagnostic methods.
- Gain valuable insight into emerging technologies and cost-effective utilization of imaging methods.
- Review the current radiation dose saving recommendations and guidelines.
- Demonstrate an increased awareness of radiation risks and appropriate use criteria for imaging procedures.

*No special educational preparation is required for this CME activity.*

22<sup>nd</sup> Annual  
Breast Imaging and  
Interventions Update

### About The Meeting...

The 22<sup>nd</sup> Annual Breast Imaging and Interventions Update will provide a practical overview of breast imaging and interventions by leaders in the field. Subjects being covered include: diagnosis of breast pathology using mammography, ultrasound and magnetic resonance imaging; interventional procedures including core biopsies of breast imaging and current trends optimizing your breast imaging program. Also, included will be MR and digital breast tomosynthesis case reviews.

### Target Audience

The course is designed for practicing radiologists who wish a comprehensive review and update of breast imaging and breast interventions. The course is also appropriate for radiology residents, fellows, technologists, and nurses involved in breast imaging.

### Accreditation

The University of California San Diego School of Medicine is accredited by the Accreditation Council for Continuing Medical Education to provide continuing medical education for physicians.

The University of California San Diego School of Medicine designates this live activity for a maximum of 15.5 *AMA PRA Category 1 Credit(s)*<sup>™</sup>. Physicians should claim only the credit commensurate with the extent of their participation in the activity.

Category A/A+ CE Credit is pending approval by the ASRT. The number of A CE credits will be available approximately 30 days prior to the meeting. Please visit [ucsd.edusymp.com](http://ucsd.edusymp.com) or call (813) 806-1000 regarding the availability of Category A CE credit.

### Educational Objectives

Attendees should, at the completion of this course, be able to:

- Discuss the controversies in breast cancer screening.
- Create imaging protocols in young patients.
- Describe the role of breast core biopsy and imaging histologic correlation in evaluating suspicious breast imaging findings.
- Discuss current issues in the management of breast cancer.
- Recognize the current breast cancer economics and medical legal implications of breast imaging.
- Explain new technologies in breast imaging including full field digital mammography, digital breast tomosynthesis, ultrasound and MRI.

*No special educational preparation is required for this CME activity.*

# Post Graduate Fluoroscopy Session

## About The Meeting...

Attend the **Post Graduate Fluoroscopy Session** and hear the latest and best practices in fluoroscopic safety. The sessions will focus on the radiation risks, protection, appropriate use and safety tips.

## Target Audience

The course is designed for board certified radiologists and for any physician who uses fluoroscopy as part of their private or academic practice. This course is also appropriate for trainees at various levels in diagnostic imaging and other specialties desiring insight into fluoroscopic safety.

## Educational Objectives

Attendees should, at the completion of this course, be able to:

- Gain valuable insight into the association of radiation dose and harm from radiation.
- Demonstrate an increased awareness of radiation risks and appropriate use of protective devices and techniques.
- Review current recommendations for achieving ALARA, the lowest possible radiation dose during fluoroscopic procedures.

*No special educational preparation is required for this CME activity.*

## Meeting Information

### Registration Information

Tuition for these live webcasts includes participation for one registrant. Each registrant must sign-in on a separate computer to receive credit. Prior to the meeting we will send you further information about the log in process. We will also send you a comprehensive color electronic course syllabus via email. If you have any questions or problems logging into the meeting, we will have support personnel available at 813-806-1000.

### Cancellations

We are offering no risk registration. Should you need to cancel your registration you may do so without penalty. Cancellations must be received in writing by sending an e-mail to [cancel@edusymp.com](mailto:cancel@edusymp.com).

### Cultural and Linguistic Competency

This activity is in compliance with California Assembly Bill 1195 which requires continuing medical education activities with patient care components to include curriculum in the subjects of cultural and linguistic competency. Cultural competency is defined as a set of integrated attitudes, knowledge, and skills that enables health care professionals or organizations to care effectively for patients from diverse cultures, groups, and communities. Linguistic competency is defined as the ability of a physician or surgeon to provide patients who do not speak English or who have limited ability to speak English, direct communication in the patient's primary language. Cultural and linguistic competency was incorporated into the planning of this activity. Additional resources on cultural and linguistic competency and information about AB1195 can be found on the UCSD CME website at <http://cme.ucsd.edu>.

### Disclosure

It is the policy of the University of California San Diego School of Medicine to ensure balance, independence, objectivity and scientific rigor. All persons involved in the selection, development and presentation of content are required to disclose any real or apparent conflicts of interest. All conflicts of interest will be resolved prior to an educational activity being delivered to learners through one of the following mechanisms 1) altering the financial relationship with the commercial interest, 2) altering the individual's control over CME content about the products or services of the commercial interest, and/or 3) validating the activity content through independent peer review. All persons are also required to disclose any discussions of off label/unapproved uses of drugs or devices. Persons who refuse or fail to disclose will be disqualified from participating in the CME activity.

### Special Note for the Disabled

Educational Symposia wishes to ensure that no individual with a disability is excluded, denied services, segregated or otherwise treated differently from other individuals because of the absence of auxiliary aids and services. If you need any auxiliary aids or services identified in the Americans with Disabilities Act, please contact our office at (813) 806-1000.

# Faculty - 45<sup>th</sup> Annual Post Graduate Radiology Course

## Course Director

### **Katherine M. Richman, M.D., FACR**

*Clinical Professor of Radiology  
University of California San Diego  
San Diego, CA*

## Guest Faculty

### **Elliot K. Fishman, M.D., FACR**

*Elliot K. Fishman MD Professorship in  
Radiology  
Professor of Radiology, Surgery, Oncology and  
Urology  
Director, Diagnostic Imaging and Body CT  
The Russell H. Morgan Department of  
Radiology and Radiological Science  
The Johns Hopkins University  
Baltimore, MD*

### **David L. Levin, M.D., Ph.D.**

*Professor of Radiology  
Mayo Clinic College of Medicine and Science  
Rochester, Minnesota  
Health Sciences Clinical Professor  
(Voluntary)  
University of California San Diego  
San Diego, CA*

## UC San Diego Faculty

### **Sharon Brouha, M.D., MPH**

*Associate Professor  
Department of Radiology  
University of California San Diego  
San Diego, CA*

### **Christopher J. Friend, M.D., MBA**

*Associate Professor of Interventional  
Radiology  
University of California San Diego  
VA San Diego Healthcare System  
San Diego, CA*

### **Michael E. Hahn, M.D., Ph.D.**

*Assistant Clinical Professor, Body Imaging,  
Department of Radiology  
Director, Body Imaging Fellowship  
University of California San Diego  
Medical Center  
San Diego, CA*

### **Carl K. Hoh, M.D.**

*Associate Professor of Radiology  
Division Chief Nuclear Medicine  
University of California San Diego  
San Diego, CA*

### **Tudor Hughes, M.D., FRCR**

*Professor of Clinical Radiology  
UCSD Medical Center  
Department of Radiology  
University of California San Diego  
San Diego, CA*

### **Sonya Koo, M.D.**

*Assistant Clinical Professor  
University of California San Diego  
San Diego, CA*

### **Roland R. Lee, M.D., FACR**

*Professor of Radiology  
Director of Magnetoencephalography  
University of California, San Diego  
Director of MRI and Director of  
Neuroradiology  
VA San Diego Healthcare System  
San Diego, CA*

### **Joy Liaw, M.D., Ph.D.**

*Assistant Professor of Clinical, Radiology  
University of California San Diego  
San Diego, CA*

### **Marin McDonald, M.D., Ph.D.**

*Assistant Clinical Professor  
University of California San Diego  
San Diego, CA*

### **Quinn C. Meisinger, M.D.**

*Assistant Professor of Interventional  
Radiology  
Co-Program Director - Interventional  
Radiology Residency  
UC San Diego & VA San Diego  
San Diego, CA*

### **John Naheedy, M.D.**

*Rady Children's Hospital, San Diego  
University of California San Diego  
San Diego, CA*

### **Mishella Perez, BS, RDMS, RDCS**

*Clinical Ultrasound Educator  
Division of Maternal Fetal Medicine  
Scripps Health, San Diego  
San Diego, CA*

### **Donald L. Resnick, M.D.**

*Professor Emeritus of Radiology  
University of California San Diego  
San Diego, CA*

# Faculty - 22<sup>nd</sup> Annual Breast Imaging and Interventions Update

## Course Directors

### **Mohammad Eghtedari, M.D., Ph.D.**

*Associate Professor of Radiology  
Breast Imaging  
University of California San Diego  
San Diego, CA*

### **Haydee Ojeda-Fournier, M.D.**

*Professor of Radiology  
Medical Director, Breast Imaging  
University of California San Diego  
San Diego, CA*

## Guest Faculty

### **Beatriz E. Adrada, M.D.**

*Associate Professor  
Division of Diagnostic Imaging  
The University of Texas MD Anderson  
Cancer Center  
Houston, TX*

## UC San Diego Faculty

### **R. James Brenner, M.D., JD, FACR, FCLM**

*Professor of Clinical Radiology  
University of California San Diego  
San Diego, CA*

### **Alice Chong, M.D., MHCI**

*Associate Professor, Department of Radiology  
Breast Imaging Fellowship Director  
Radiology Residency Associate Director  
University of California San Diego  
La Jolla, CA*

### **Brian Datnow, M.D.**

*Clinical Professor of Pathology  
Breast and Gynecologic Pathology  
Department of Pathology  
University of California San Diego*

### **Azadeh Elmi, M.D.**

*Assistant Professor of Radiology  
Breast Imaging  
University of California San Diego  
La Jolla, CA*

### **David J. Hall, Ph.D., DABR**

*Professor of Radiology  
Director, Diagnostic Medical Physics  
University of California San Diego  
La Jolla, CA*

### **Ava Hosseini, M.D.**

*Surgical Oncologist  
Assistant Professor of Surgery  
UC San Diego Health  
La Jolla, CA*

### **Vivian Lim, M.D.**

*Clinical Professor  
University of California San Diego  
San Diego, CA*

### **Rebecca Rakow-Penner, M.D., Ph.D.**

*Assistant Professor  
University of California San Diego  
San Diego, CA*

# Program - 22<sup>nd</sup> Annual Breast Imaging and Interventions Update

## Friday, October 30, 2020

1:25 – 1:30	Welcome and Announcements <i>Haydee Ojeda-Fournier, M.D.</i>
1:30 – 2:15	Screening for Breast Cancer <i>Mohammad Eghtedari, M.D., Ph.D.</i>
2:15 – 2:45	EQUIP and Positioning <i>Alice Chong, M.D.</i>
2:45 – 3:00	<b>Break</b>
3:00 – 3:45	Breast Cancer Staging at MD Anderson Including WBUS <i>Beatriz E. Adrada, M.D.</i>
3:45 – 4:30	Tips and Tricks for BI-RADS Use <i>Haydee Ojeda-Fournier, M.D.</i>
4:30 – 5:15	Case Review <i>Vivian Lim, M.D.</i>
5:15 – 5:30	Question and Answer Session <i>Faculty</i>
5:30	<b>End of Session</b>

## Saturday, October 31, 2020

Updates in Digital Mammography/MRI SAM Session	
8:00 – 9:00	Physics, MQSA, and Tomosynthesis <i>David J. Hall, Ph.D., DABR</i>
9:00 – 9:45	MR Techniques and Indications <i>Rebecca Rakow-Penner, M.D., Ph.D.</i>
9:45 – 10:00	<b>Break</b>
Image Guided Interventions SAM Session	
10:00 – 10:45	Biopsy: US, MRI, and FNA <i>Mohammad Eghtedari, M.D., Ph.D.</i>
10:45 – 11:30	DBT and Stereotactic Guided Biopsy, and Wireless Localization <i>Haydee Ojeda-Fournier, M.D.</i>
11:30 – 12:15 PM	Molecular Breast Imaging <i>Beatriz E. Adrada, M.D.</i>
12:15 – 1:30	<b>Lunch Break</b>

## Saturday, October 31, 2020 (Continued)

1:30 – 2:00	Breast Surgery Update <i>Ava Hosseini, M.D.</i>
2:00 – 2:30	Breast Pathology <i>Brian Darnow, M.D.</i>
2:30 – 3:00	Medicolegal Part 1 <i>R. James Brenner, M.D., JD, FÁCR, FCLM</i>
3:00 – 3:15	<b>Break</b>
3:15 – 3:45	Medicolegal Part 2 <i>R. James Brenner, M.D., JD, FÁCR, FCLM</i>
3:45 – 4:15	Diagnostic Imaging 1: Male, Pregnant and Pain <i>Haydee Ojeda-Fournier, M.D.</i>
4:15 – 4:45	Diagnostic Imaging 2: Call Backs, Asymmetries, Paplable Masses and Skin Involvement <i>Mohammad Eghtedari, M.D., Ph.D.</i>
4:45 – 5:30	Breast US Case Review <i>Beatriz E. Adrada, M.D.</i>
5:30 – 5:45	Question and Answer Session <i>Faculty</i>
5:45	<b>End of Session</b>

## Sunday, November 1, 2020

8:00 – 8:30	Serving the Underserved <i>Alice Chong, M.D.</i>
8:30 – 9:00	DBT of Calcifications <i>Azadeh Elmi, M.D.</i>
9:00 – 9:30	Implant Evaluation <i>Beatriz E. Adrada, M.D.</i>
9:30 – 9:45	<b>Break</b>
9:45 – 10:15	AI in Breast Imaging <i>Mohammad Eghtedari, M.D., Ph.D.</i>
10:15 – 10:45	Advanced MR Applications: Abbreviated MR and DWI <i>Rebecca Rakow-Penner, M.D., Ph.D.</i>
10:45 – 11:15	Talking to Patients <i>Azadeh Elmi, M.D.</i>
11:15 – 12:00 PM	Case Review <i>Haydee Ojeda-Fournier, M.D.</i>
12:00	<b>End of Course</b>

Faculty & topics subject to change.

**\*Self-Assessment Modules (SAMs):** UC San Diego has been granted Deemed Status by the American Board of Radiology (ABR). This allows Educational Symposia to develop and implement SAMs that satisfy ABR Part II MOC requirements.

# Program - 45<sup>th</sup> Annual Post Graduate Radiology Course

## Monday, October 26, 2020

**FOCUS:**  
Meticulous MSK Imaging  
*Moderator: Katherine M. Richman, M.D., FACR*

8:00 – 9:00 Superior Labrum and the Throwing Shoulder: Normal Variants versus Real Lesions  
*Donald L. Resnick, M.D.*

9:00 – 10:00 Target Area Approach to Arthritis  
*Donald L. Resnick, M.D.*

**10:00 – 10:15 Break**

10:15 – 11:00 Musculoskeletal Fat: Friend or Foe?  
*Donald L. Resnick, M.D.*

11:00 – 12:00 PM Macroinstability of the Glenohumeral Joint: What You Need to Know  
*Donald L. Resnick, M.D.*

**12:00 – 1:30 Lunch Break**

**FOCUS:**  
Nuclear Medicine Fundamentals & Updates; Health Information for Radiologists  
*Moderator: Katherine M. Richman, M.D., FACR*

1:30 – 2:15 Nucs Knowledge Part 1: Nuclear Medicine Review and Pitfalls  
*Carl K. Hoh, M.D.*

2:15 – 3:00 Nucs Knowledge Part 2: Nuclear Medicine Review and Pitfalls  
*Carl K. Hoh, M.D.*

**3:00 – 3:15 Break**

3:15 – 4:00 Perfect PET Imaging: PET/CT Imaging Update and Pitfalls  
*Sonya Koo, M.D.*

4:00 – 4:45 To Go Where No Tracer Has Gone Before: New Nuclear Medicine Therapies and Theragnostics  
*Sonya Koo, M.D.*

4:45 – 5:30 Is Your Job Killing You? The Dangers of Sitting  
*Katherine M. Richman, M.D., FACR*

**5:30 End of Session**

## Tuesday, October 27, 2020

**FOCUS:**  
Hot Topics in Body Imaging  
*Moderator: Katherine M. Richman, M.D., FACR*

8:00 – 8:45 CT Evaluation of Splenic Masses A Practical Approach  
*Elliot K. Fishman, M.D., FACR*

8:45 – 9:30 Great Balls of Fire: Testicular Sonography Update  
*Katherine M. Richman, M.D., FACR*

9:30 – 10:15 Missed Diagnosis in Abdominal CT: Strategies and Pitfalls  
*Elliot K. Fishman, M.D., FACR*

**10:15 – 10:30 Break**

10:30 – 11:15 Where's the Baby? First Trimester Emergencies  
*Katherine M. Richman, M.D., FACR*

11:15 – 12:00 MDCT Evaluation of Gastric Malignancies  
*Elliot K. Fishman, M.D., FACR*

12:00 – 12:30 PM Question and Answer Session  
*Faculty*

**12:30 – 1:30 Lunch Break**

**FOCUS:**  
Renal, Pancreas, Prostate, and MR OB Imaging  
*Moderator: Katherine M. Richman, M.D., FACR*

1:30 – 2:15 MDCT/CTA Evaluation of the Suspected Renal Mass: Key Differential Clues  
*Elliot K. Fishman, M.D., FACR*

2:15 – 3:00 Pancreatic Problems: The Good, The Bad, The Ugly  
*Joy Liao, M.D.*

**3:00 – 3:15 Break**

3:15 – 4:00 Pesky Prostate Imaging Made Easy: Improved PI-RADS  
*Michael E. Hahn, M.D., Ph.D.*

4:00 – 4:45 Best of Biliary Imaging  
*Joy Liao, M.D.*

4:45 – 5:30 Normal or Nasty? US and MRI of C-Section Pregnancy and Placenta Accreta Spectrum  
*Michael E. Hahn, M.D., Ph.D.*

**5:30 End of Session**

## Wednesday, October 28, 2020

### FOCUS:

#### Critical Findings in Thoracic & Cardiac Imaging

*Moderator: Katherine M. Richman, M.D., FACR*

- 8:00 – 8:45      2020 Update on Lung Cancer  
*David L. Levin, M.D., Ph.D.*
- 8:45 – 9:30      Did You See This?  
Missed Chest Cases  
*Sharon Brouha, M.D., MPH*
- 9:30 – 10:15      Fever, Cough and Infiltrate:  
Oh My! Lung Infections  
*David L. Levin, M.D., Ph.D.*
- 10:15 – 10:30      **Break**
- 10:30 – 11:15      Take Heart:  
Cardiac Findings on  
Routine Chest Studies  
*Sharon Brouha, M.D., MPH*
- 11:15 – 12:00 PM      ABC's of HRCT:  
Basic Concepts and  
Building Blocks  
*David L. Levin, M.D., Ph.D.*
- 12:00 – 1:30      **Lunch Break**

### FOCUS:

#### Thoracic and Pediatric Imaging

*Moderator: Katherine M. Richman, M.D., FACR*

- 1:30 – 2:15      Intricacies of Interstitial Lung  
Disease: UIP and Others  
*David L. Levin, M.D., Ph.D.*
- 2:15 – 3:00      What Happened?  
Post-Op Thoracic Surgery  
Complications  
*Sharon Brouha, M.D., MPH*
- 3:00 – 3:15      **Break**
- 3:15 – 4:00      Perfecting Pleural Imaging  
*Sharon Brouha, M.D., MPH*
- 4:00 – 4:45      Has Harm Been Done?  
Imaging of Pediatric  
Nonaccidental Trauma  
*John Nabeedy, M.D.*
- 4:45 – 5:30      Perils of Pediatric  
Brain Imaging  
*John Nabeedy, M.D.*
- 5:30      **End of Session**

## Thursday, October 29, 2020

### FOCUS:

#### Hot Topics in Brain Imaging

*Moderator: Katherine M. Richman, M.D., FACR*

- 8:00 – 8:45      Don't Call That Abnormal:  
Confusing Anatomic Variants  
in the Brain  
*Marin McDonald, M.D., Ph.D.*
- 8:45 – 9:30      Basic Vascular Malformations  
*Roland R. Lee, M.D., FACR*
- 9:30 – 10:15      Stay Out of Court: Missed  
Cases in Neuroradiology  
*Marin McDonald, M.D., Ph.D.*
- 10:15 – 10:30      **Break**
- 10:30 – 11:15      What Nerve!  
Cranial Nerves 101  
*Marin McDonald, M.D., Ph.D.*
- 11:15 – 12:00 PM      Back to Basics:  
Classic Neuro Cases  
*Roland R. Lee, M.D., FACR*
- 12:00 – 1:30      **Lunch Break**

### FOCUS:

#### Imaging of Epilepsy & Updates on MSK Imaging, Including Sports Injuries, MSK Ultrasound

*Moderator: Katherine M. Richman, M.D., FACR*

- 1:30 – 2:15      Seizure Sleuthing:  
Imaging of Epilepsy  
*Roland R. Lee, M.D., FACR*
- 2:15 – 3:00      ESPN Meets Radiology:  
Sports Injuries  
*Tudor Hughes, M.D., FRCR*
- 3:00 – 3:15      **Break**
- 3:15 – 4:00      Don't Make the Same  
MSK CQI Misses  
*Tudor Hughes, M.D., FRCR*
- 4:00 – 4:45      Hot Mess: MSK Infection  
*Tudor Hughes, M.D., FRCR*
- 4:45 – 5:30      Ultrasound With a Kick:  
MSK Ultrasound  
*Tudor Hughes, M.D., FRCR*
- 5:30      **End of Session**



## Friday, October 30, 2020

### FOCUS:

Critical Findings in OB Ultrasound & IR Studies

*Moderator: Katherine M. Richman, M.D., FACR*

8:00 – 8:45	Tiny Heart, Big Issues: Fetal Cardiac Ultrasound <i>Mishella Perez BS, RDMS, RDCS</i>
8:45 – 9:30	Stay Out of Court: Best Practices for 2nd Trimester OB Ultrasound <i>Mishella Perez BS, RDMS, RDCS</i>
9:30 – 10:15	Interventional Radiology 101: A Guide for the Diagnostic Radiologist <i>Christopher J. Friend, M.D., MBA</i>
10:15 – 10:30	<b>Break</b>
10:30 – 11:15	Peripheral Vascular Disease: Imaging and Treatment <i>Christopher J. Friend, M.D., MBA</i>
11:15 – 12:00 PM	Prostate Artery Embolization: Improving Flow <i>Christopher J. Friend, M.D., MBA</i>
12:00	<b>End of Session</b>

## Saturday, October 31, 2020

No Scheduled Lectures

## Sunday, November 1, 2020

### FOCUS:

Fluoroscopic Safety

*Moderator: Katherine M. Richman, M.D., FACR*

1:00 – 2:00	What You Don't See Can Hurt You: Radiation Risks <i>Quinn C. Meisinger, M.D.</i>
2:00 – 3:00	Protect Yourself: Radiation Protection <i>Quinn C. Meisinger, M.D.</i>
3:00 – 3:15	<b>Break</b>
3:15 – 4:15	Radiation Safety in CT <i>Tudor Hughes, M.D., FRCR</i>
4:15 – 5:30 PM	Did You Learn It All? Quiz Time on Radiation Safety <i>Tudor Hughes, M.D., FRCR</i>
5:30	<b>End of Course</b>



4 EASY WAYS TO REGISTER

We Accept



**INTERNET**  
<http://ucsd.edusymp.com>

**MAIL**  
Check payable to  
UC San Diego:  
Educational Symposia  
5620 West Sligh Avenue  
Tampa, Florida 33634-4490

**FAX**  
(813) 806-1001  
**PHONE**  
(813) 806-1000

Registration Form:

UCSDPGW20 / UCSDBFW20

45<sup>th</sup> Annual  
**Post Graduate  
Radiology Course**

October 26 – November 1, 2020



22<sup>nd</sup> Annual  
**Breast Imaging And  
Interventions Update**

October 30 – November 1, 2020

Includes Electronic  
Color Syllabus

**ATTEND BOTH & SAVE**

**I AM A**  
(please select one)

\*Must Enclose or fax  
letter from your Director  
certifying status.

- Physician
- Scientist
- Company Personnel

Attend  
All Week  
& SAVE!  
10/26 - 11/1

\$1,800

Post  
Graduate  
10/26 - 11/1

\$1,295

Fluoro  
Safety Only  
11/1

\$300

Breast  
Imaging  
10/26 - 11/1

\$700

- Technologist
- Nurse
- Retired Physician
- VA Physician\*
- Fellow\*
- Resident\*
- Full Time Military\*

\$1,170

\$825

\$200

\$495

Name  M.D.  D.O.  Ph.D.  P.A.  R.T.  R.N.  Other

Company Specialty

Address City / State / Zip / Country

Phone Email (REQUIRED FOR ELECTRONIC SYLLABUS)

Card Number Exp. Date Security Code

Billing Address City / State / Zip / Country

Cardholder Signature